

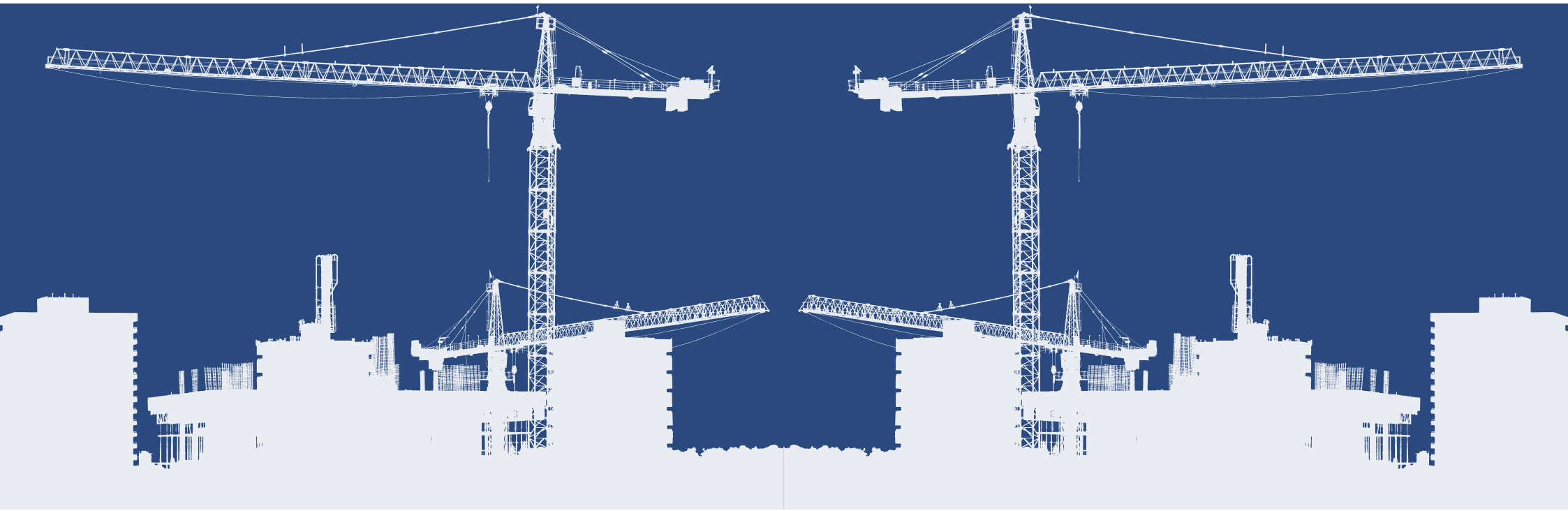


2025

PRODUCT BROCHURE 2025

# MANUFACTURING RUBBER FLOORING SOLUTIONS

RELIANT RUBBER ENGINEERS LIMITED



# ABOUT US

Founded in 1986, Reliant initially specialised in repairing and refurbishing rubber-coated rollers for the industrial, printing, and food sectors. Over the years, we've expanded our offerings to include a wide range of polymers, serving global clients. This growth has led us into new markets, including steam traction engine wheel re-covering, moulded products, foam, cork, rubber gaskets, PVC sheeting, rubber matting and flooring, and ceramic lagging coatings for critical applications

# MISSION

*"Providing innovative, eco-friendly rubber flooring and engineering solutions focused on safety, durability, and affordability."*

We deliver high-quality, sustainable products made from natural and recycled materials. We offer customised solutions that meet clients' needs while ensuring long-lasting performance and environmental responsibility.

# VISION

To be a leader in innovative rubber solutions, setting the standard for sustainability, durability, and safety across industries while driving client success.

# VALUES

- Sustainability: Using eco-friendly materials to minimise our environmental impact.
- Durability: Offering long-lasting, reliable products.
- Affordability: Delivering high-quality solutions at competitive prices.
- Customisation: Tailoring services to meet unique client needs.
- Safety: Our products prioritise safety, providing secure and reliable solutions across all industries.

**UPGRADE YOUR FACILITY  
WITH DURABLE SOLUTIONS  
FROM RELIANT RUBBER!**

Reliant Rubber provides high-performance rubber products for industrial businesses, including durable seals, gaskets, sheets, mats, and rolls. Engineered for reliability and long-lasting performance, our products are designed to withstand harsh environments, offering superior protection and durability for machinery, equipment, and facility flooring.

## TABLE OF CONTENT

**03**

ANTI-FATIGUE  
WORKSTATION  
ROLLS & MATS

**05**

RUBBER SHEETS

**07**

RUBBER  
FLOORING

**13**

ENTRANCE MATS

**15**

NON-SLIP  
WAREHOUSE &  
FACTORY  
FLOORING

**17**

BOOT TRAYS &  
SCRAPER MATS

**19**

VAN FLOOR  
LINERS

**21**

RAMPS &  
LOADING AREAS

**23**

GASKET,  
NEOPRENE  
SPONGE & FOAM

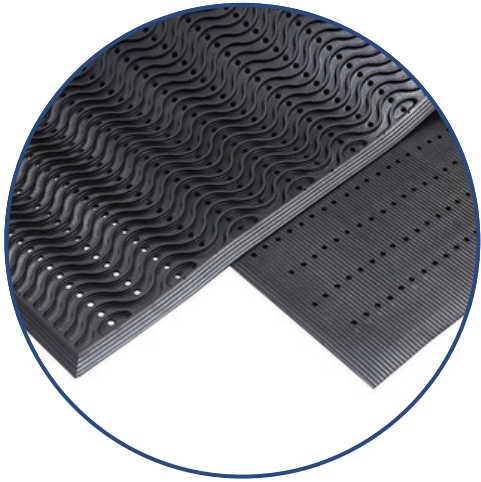
**25**

A4 RUBBER  
SAMPLES



# ANTI-FATIGUE WORKSTATION ROLLS & MATS

Our natural rubber Anti-Fatigue Workstation Rolls and Mats provide cushioning support to reduce fatigue. They feature a slip-resistant surface for safety and are built to withstand heavy-duty use for reliable performance.



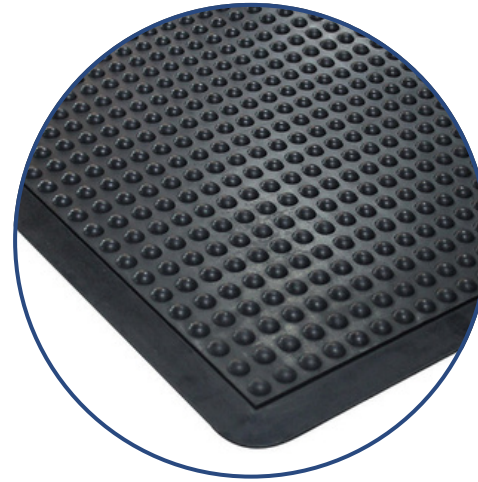
## WAVES MAT

### Size

90cm x 150cm x 12mm

### Material Composition

Natural and Recycle  
Rubber



## ANTI-FATIGUE BUBBLE MAT

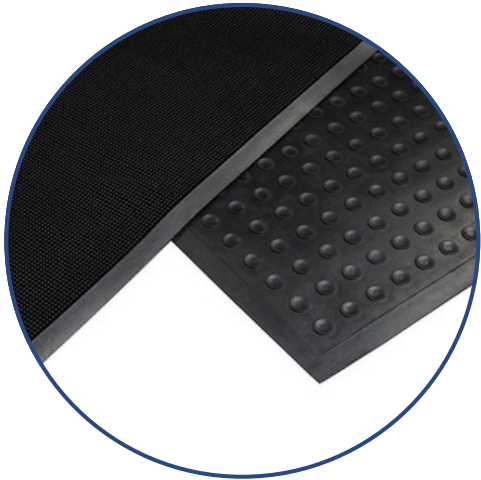
### Size

60cm x 90cm x 15mm

90cm x 120cm x 15mm

### Material Composition

Natural and Recycle Rubber



## HEAVY DUTY PIN MAT

### Size

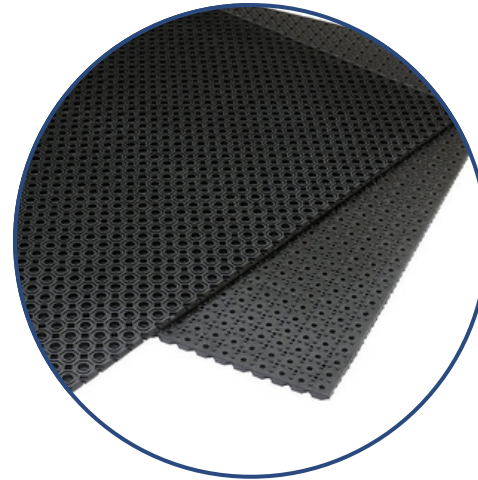
60cm x 80cm x 9mm

90cm x 150cm x 15mm

90cm x 180cm x 11mm

### Material Composition

Natural and Recycle Rubber



## TINY OCTAGON MAT

### Size

100cm x 150cm x 13mm

### Material Composition

Natural and Recycle Rubber





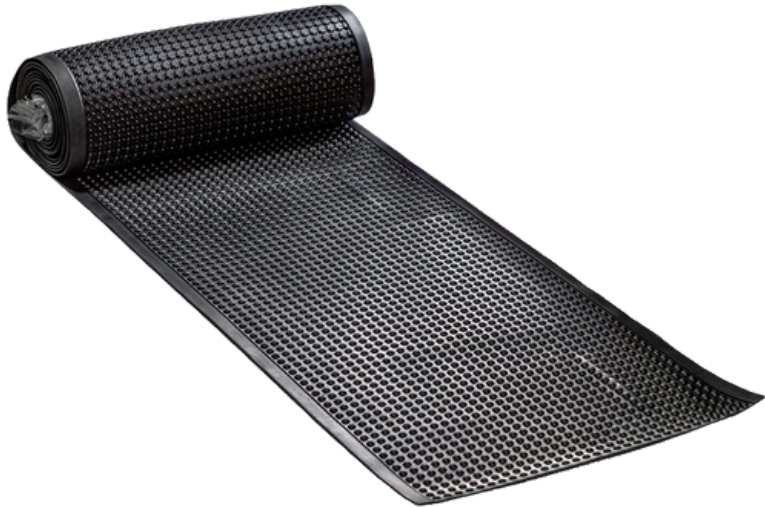
## OCTAGON ROLL

### Size

1m x 7.5m x 22mm

### Material Composition

Natural and Recycle Rubber



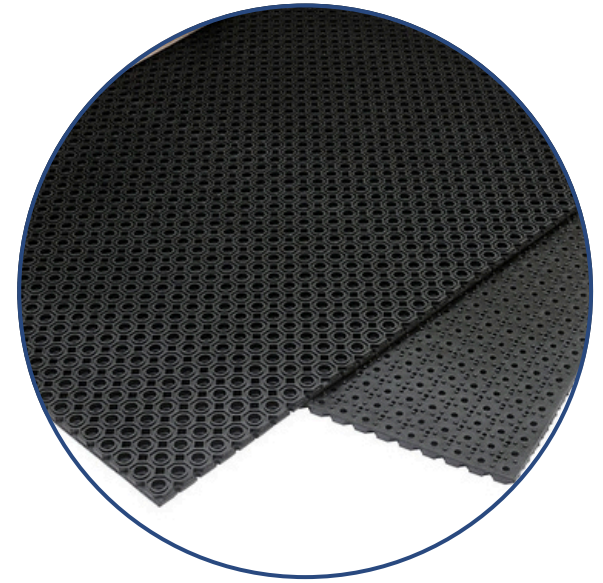
## ANTI-FATIGUE BUBBLE ROLL

### Size

0.9m x 9m x 15mm

### Material Composition

Natural and Recycle Rubber



## OCTAGON MAT

### Size

100cm x 150cm x 22mm

### Material Composition

Natural and Recycle Rubber

# RUBBER SHEETS

Reliant Rubber offers an extensive range of high-quality rubber sheets perfect for various industrial applications. Our rubber sheets provide dependable performance and flexibility, available in long rolls and customisable to your specifications.



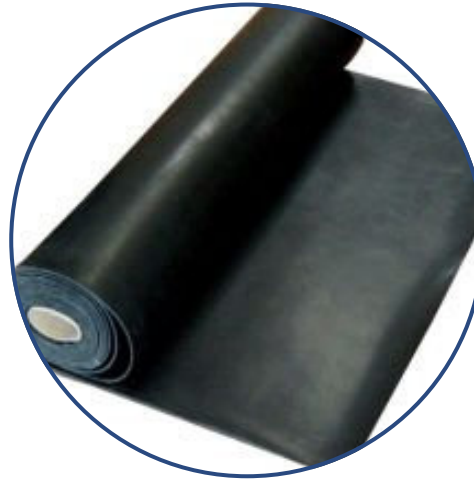
## NEBAR-RUBBER BONDED CORK

### Size

1M x 1M

### Thickness

3MM, 5MM, 6MM



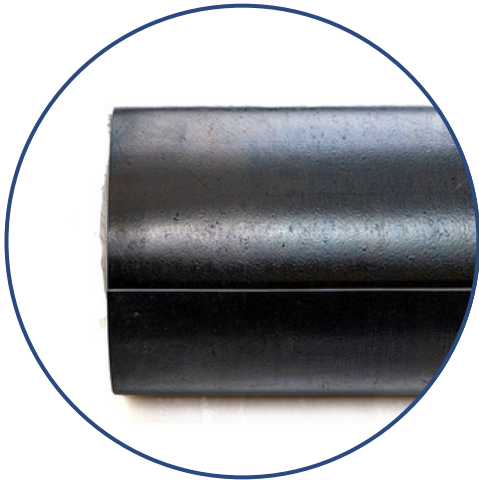
## NR/SBR Commercial Rubber Sheetting

### Size

1 - 9 M, FULL ROLL

### Thickness

1.5MM, 2MM, 3MM, 5MM, 6MM, 8MM, 10MM, 15MM



## BLACK SHOTBLAST RUBBER SHEETING

### Size

1 - 9 M, FULL ROLL

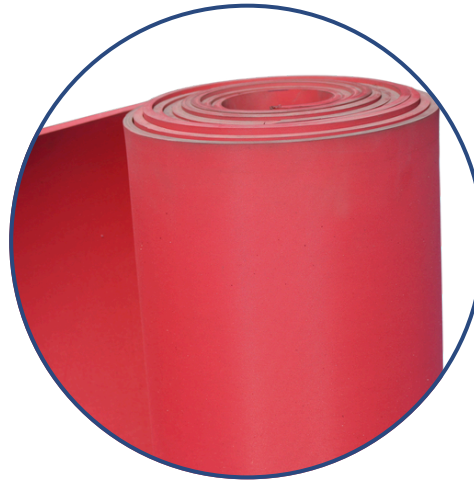
### Thickness

3MM, 6MM, 10MM, 12MM, 15MM

### Material

Plate/Plate

Cloth/Plate



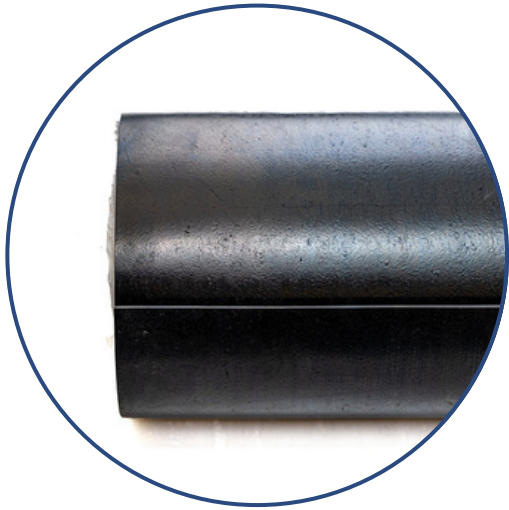
## RELIANT RED SHOTBLAST RUBBER SHEETING

### Size

1 - 9 M, FULL ROLL

### Thickness

3MM, 5MM, 10MM



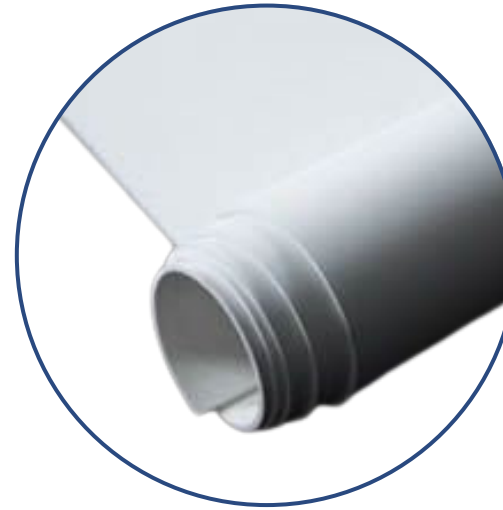
### NEOPRENE RUBBER SHEETING

#### Size

1 - 9 M, FULL ROLL

#### Thickness

1MM, 1.5MM, 2MM, 3MM, 6MM



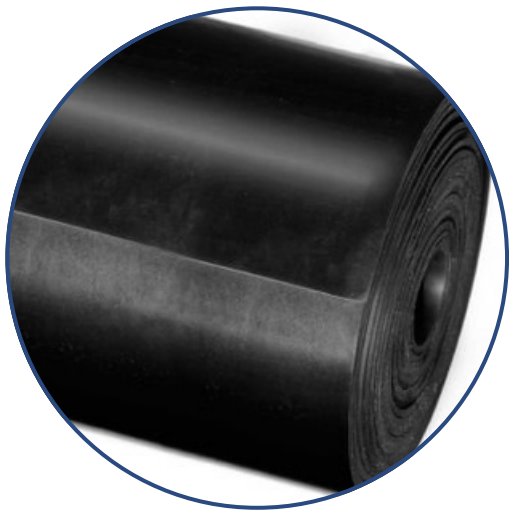
### FOOD GRADE NATURAL WHITE RUBBER SHEETING

#### Size

1 - 9 M, FULL ROLL

#### Thickness

2MM, 3MM, 5MM, 6MM



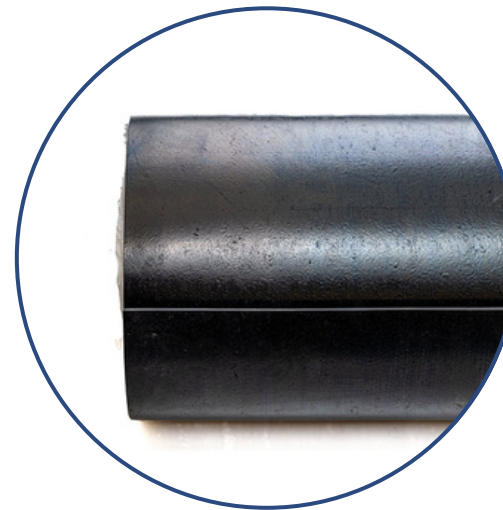
### EPDM RUBBER SHEETING MAT

#### Size

1 - 9 M, FULL ROLL

#### Thickness

1MM, 3MM



### NITRILE RUBBER SHEETING

#### Size

1 - 9 M, FULL ROLL

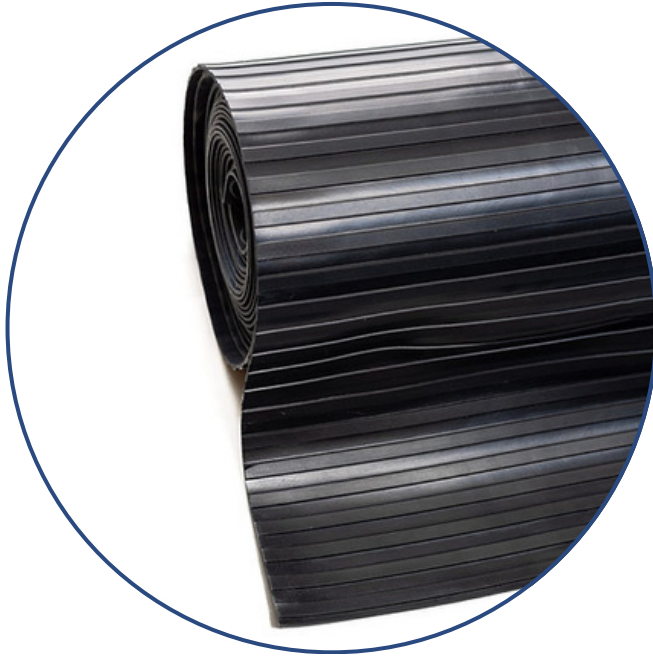
#### Thickness

1MM, 1.5MM, 2MM, 3MM, 6MM



# RUBBER FLOORING

Our rubber flooring solution provides a non-slip surface that enhances worker safety by reducing the risk of slips and falls in high-traffic areas. Known for its durability and resilience, it is easy to clean and maintain, ensuring a safe and efficient work environment. Reliable protection against wear and tear helps maintain safety standards while supporting long-lasting performance, making it an ideal choice for workplaces prioritising safety and functionality.



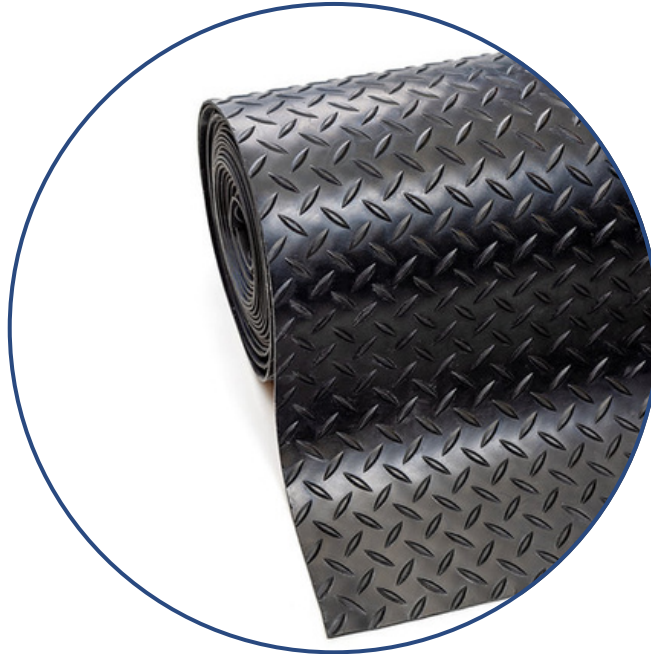
## WIDE RIBBED RUBBER FLOORING

### Size

A4, 1 - 9 M, FULL ROLL

### Thickness

3MM, 5MM



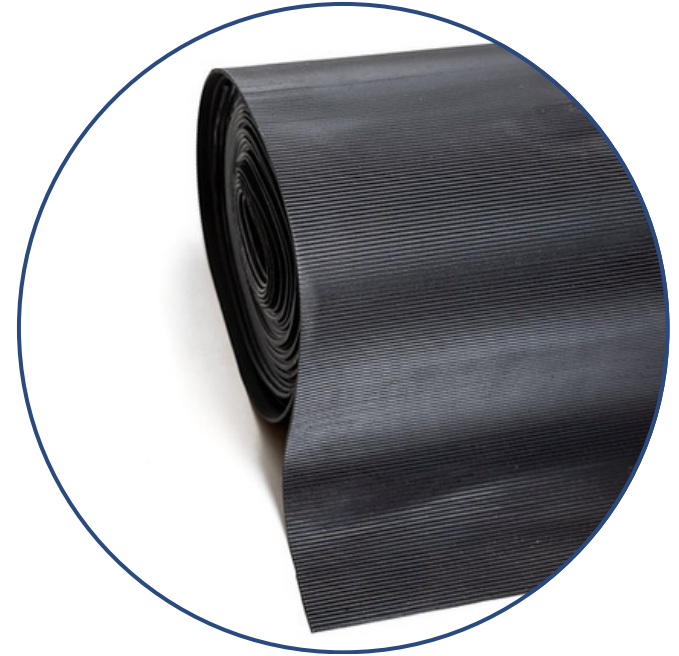
## DIAMOND CHECKER PLATE RUBBER FLOORING

### Size

A4, 1 - 9 M, FULL ROLL

### Thickness

3MM, 5MM



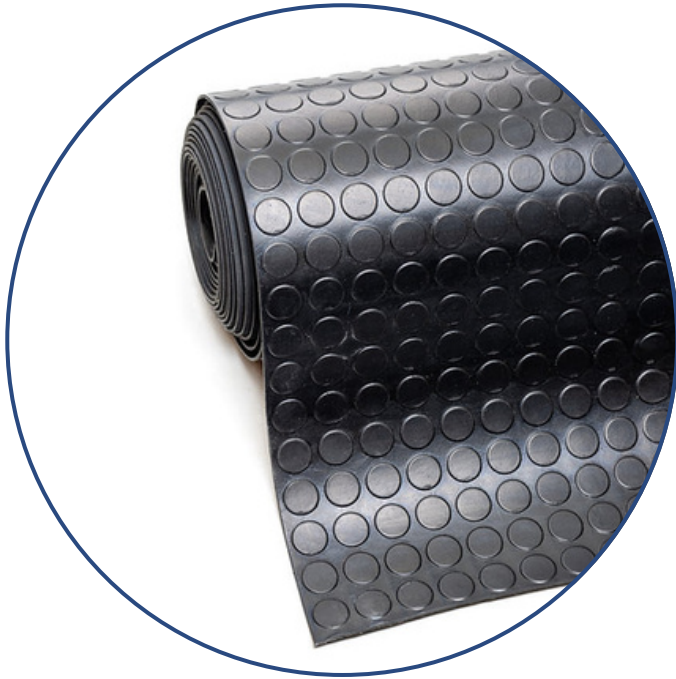
## FINE RIBBED RUBBER FLOORING

### Size

A4, 1 - 9 M, FULL ROLL

### Thickness

3MM, 5MM



## COIN RUBBER FLOORING

### Size

A4, 1 - 9 M, FULL ROLL

### Thickness

3MM, 5MM



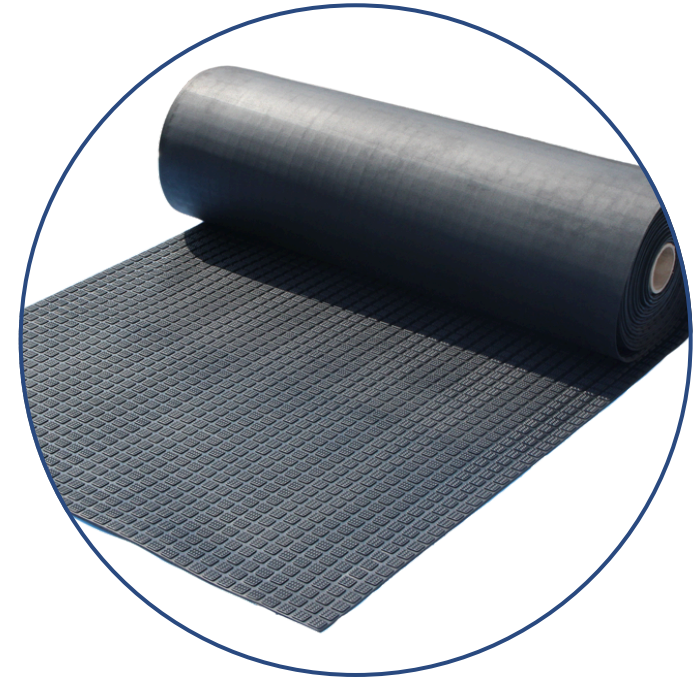
## 5-BAR RUBBER FLOORING

### Size

A4, 1 - 9 M, FULL ROLL

### Thickness

3MM, 5MM



## QUBEX ROLL | SUSTAINABLE RUBBER FLOORING

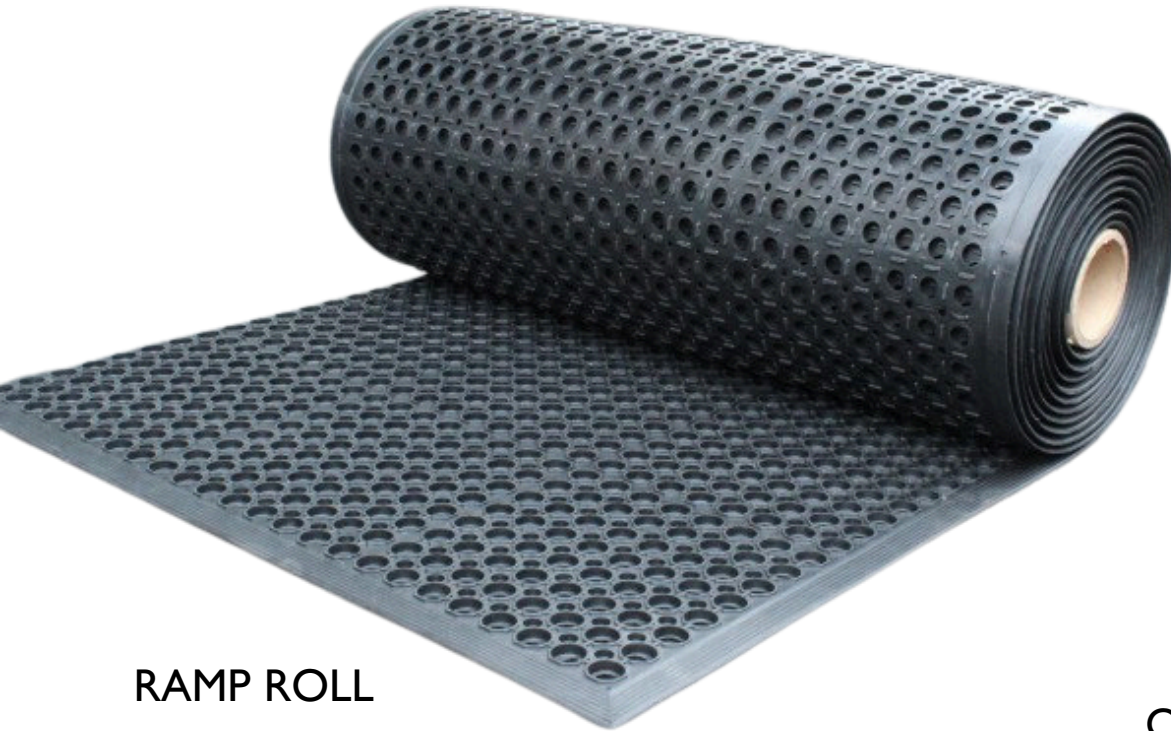
### Size

12M LONG X 1M WIDE X 6MM THICK

### Material Composition

Natural and Recycle Rubber





## RAMP ROLL

### Size

0.9m x 10m x 12mm

### Material Composition

Natural and Recycle Rubber



## OCTAGON ROLL

### Size

1m x 7.5m x 22mm

### Material Composition

Natural and Recycle Rubber





### O-RING GRASS ROLL

#### Size

1m x 7.5m x 22mm

1m x 9m x 16mm

#### Material Composition

Natural and Recycle Rubber



### OCT-O-ROLL ROLL

#### Size

1m x 9.24m x 13mm

#### Material Composition

Natural and Recycle Rubber



## **PIN ROLL**

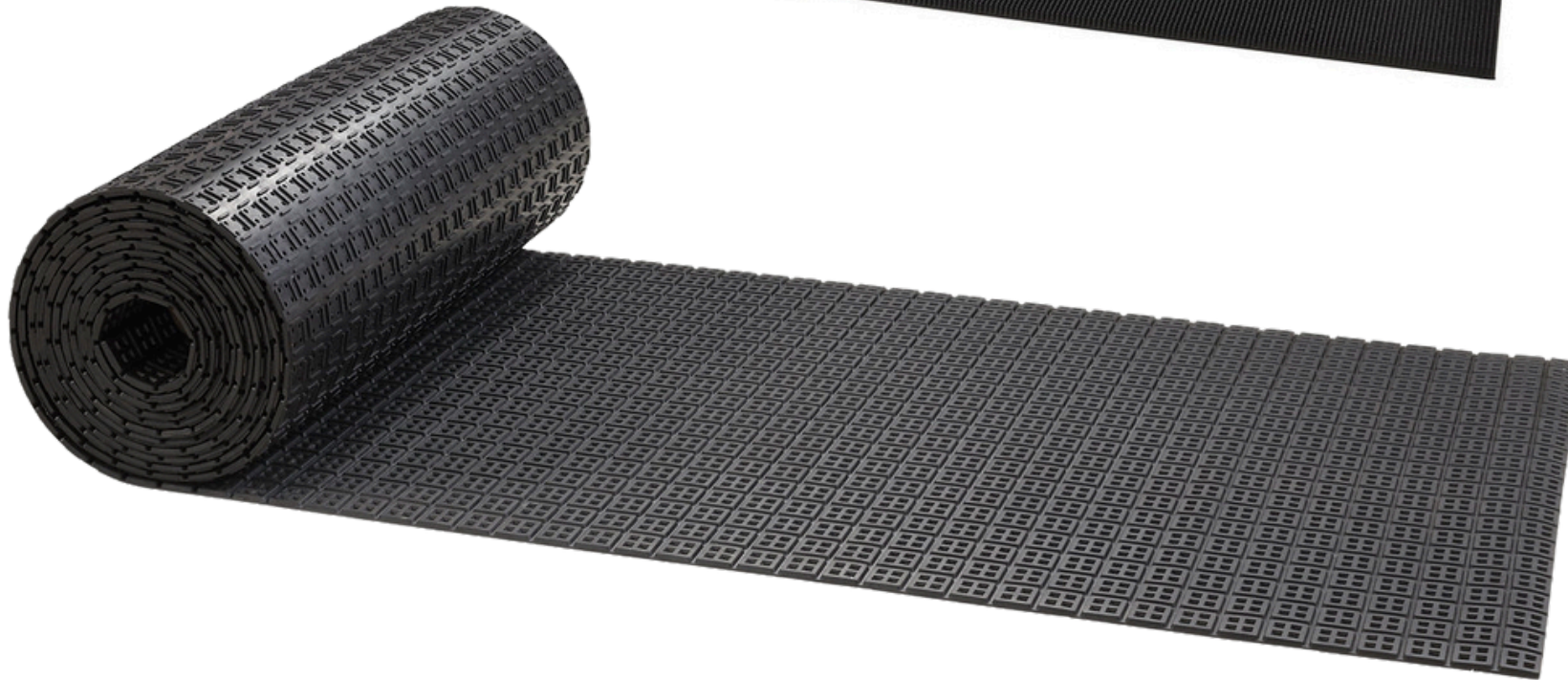
### **Size**

1m x 8m x 16mm

1m x 10m x 12mm

### **Material Composition**

Natural and Recycle Rubber



## **SQUAROW ROLL**

### **Size**

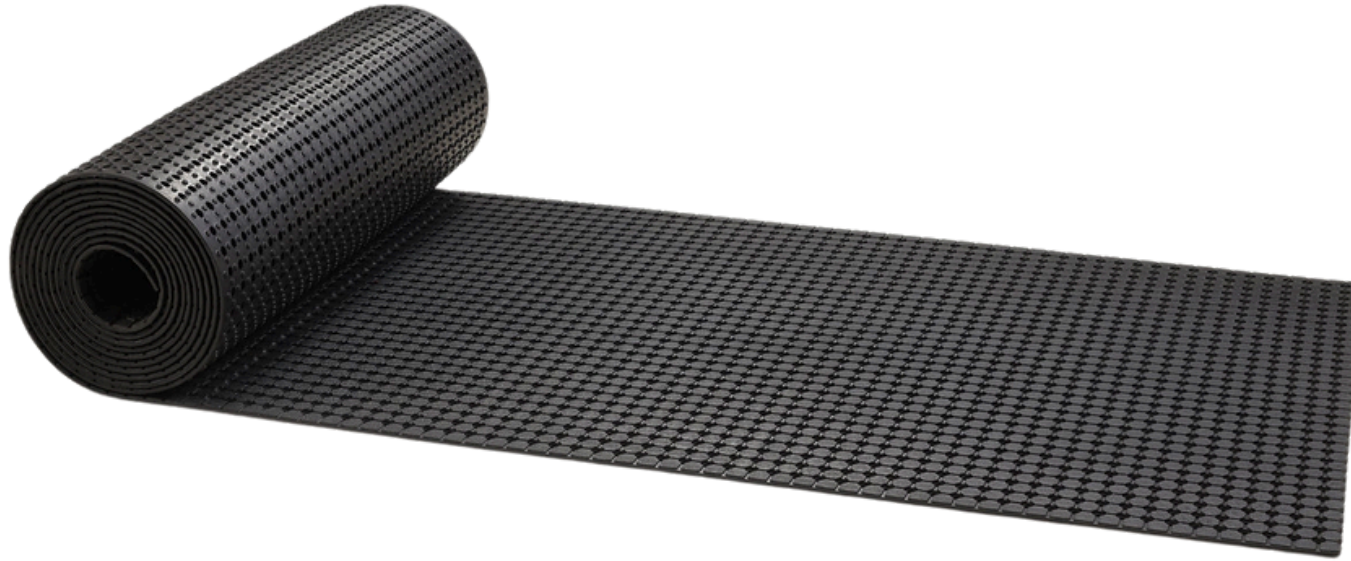
1.5m x 9m x 10mm

1m x 10.5m x 10mm

### **Material Composition**

Natural and Recycle Rubber





## COMFORT ROLL

### Size

1m x 9m x 10mm

1.5m x 9.5 x 10mm

### Material Composition

Natural and Recycle Rubber

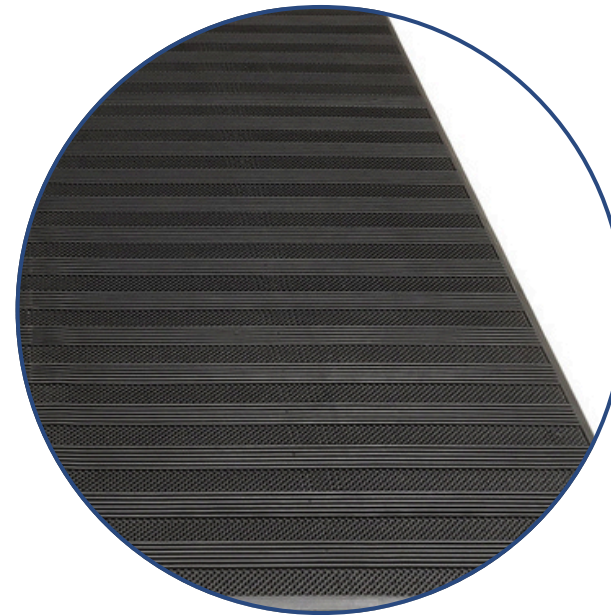
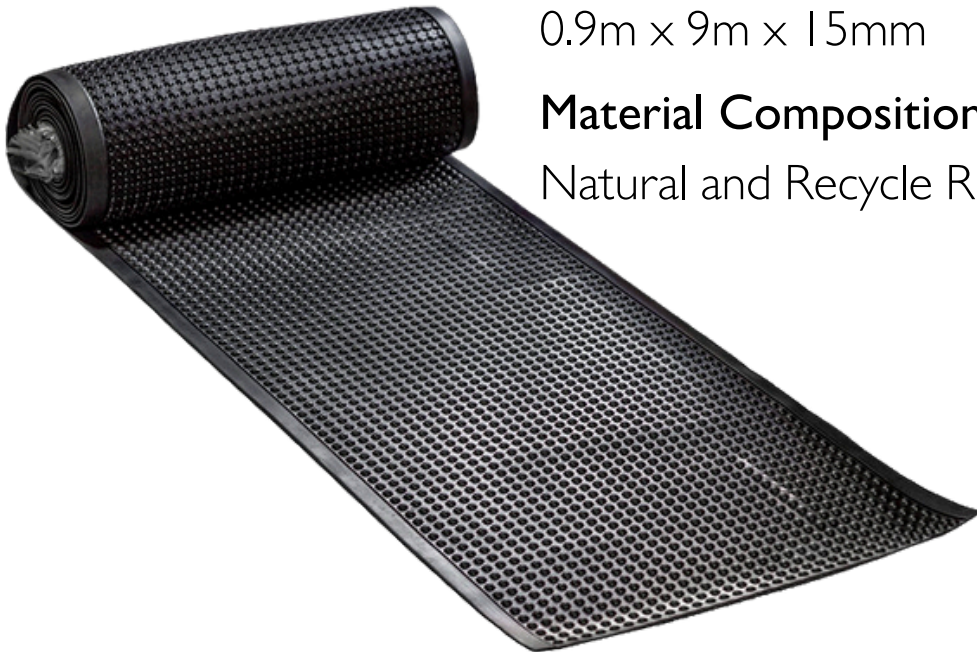
## ANTI-FATIGUE BUBBLE ROLL

### Size

0.9m x 9m x 15mm

### Material Composition

Natural and Recycle Rubber



## STRIPIN ROLL

### Size

1.9m x 7.9m x 12mm

### Material Composition

Natural and Recycle Rubber



# ENTRANCE MATS

Our entrance Mats are made from natural and recycled rubber, offering an eco-friendly solution for industrial environments. They are designed to trap dirt and moisture, protecting floors in high-traffic areas like warehouses, factories, and production floors. The non-slip surface enhances worker safety, while the durable rubber construction ensures long-lasting performance, even in demanding conditions.



Pattern A



Pattern B



Pattern C

## PVC NATURAL PRINTED COIR MAT

### Size

45cm x 75cm x 15mm

### Material Composition

Natural & Recycle Rubber



## COCO BRUSH MATS

### Size

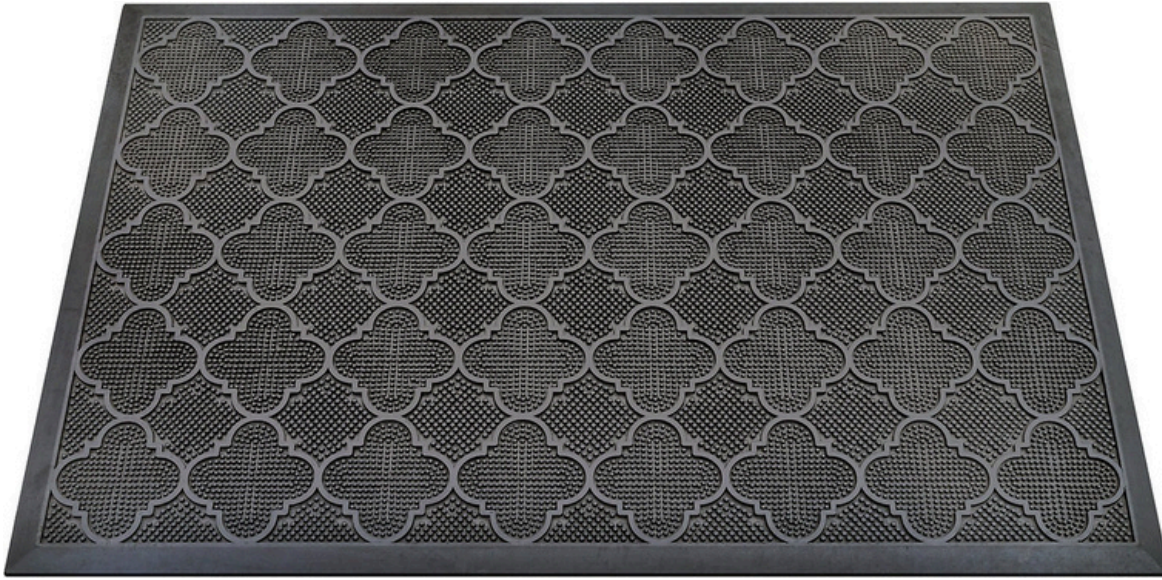
40cm x 60cm x 20mm

60cm x 90cm x 20mm

### Material Composition

Natural & Recycle Rubber





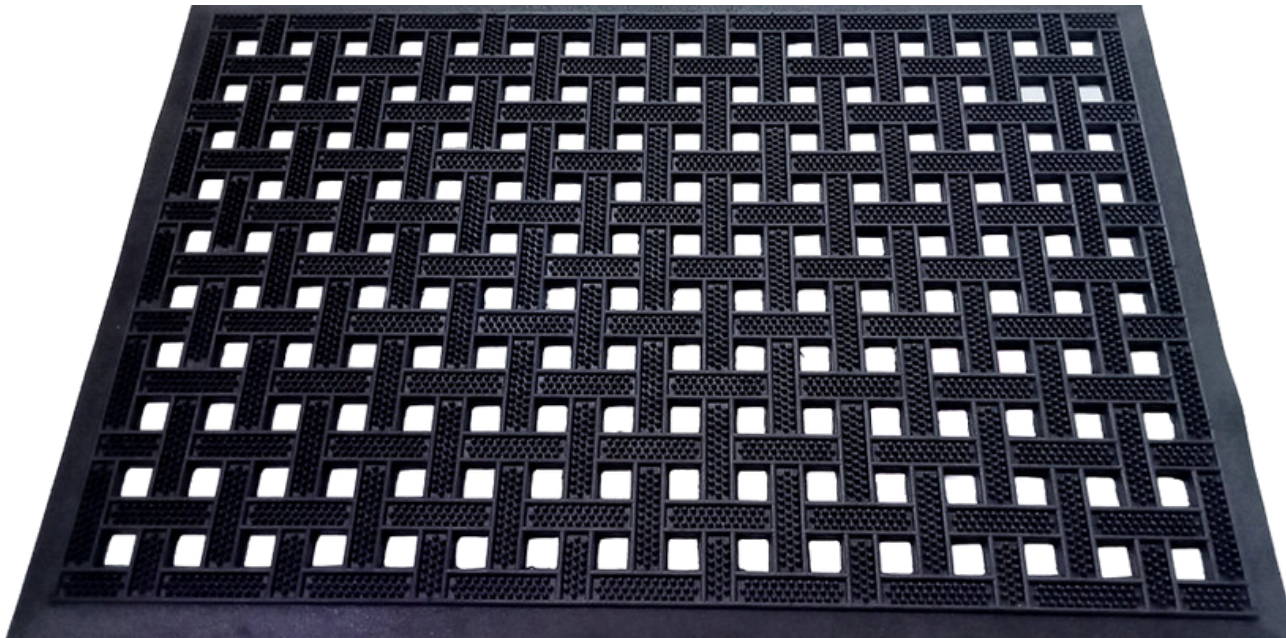
### STAR PIN ENTRANCE MAT

#### Size

60cm x 90cm x 9mm

#### Material Composition

Natural & Recycle Rubber



### BASKET PIN ENTRANCE MAT

#### Size

80cm x 120cm x 12mm

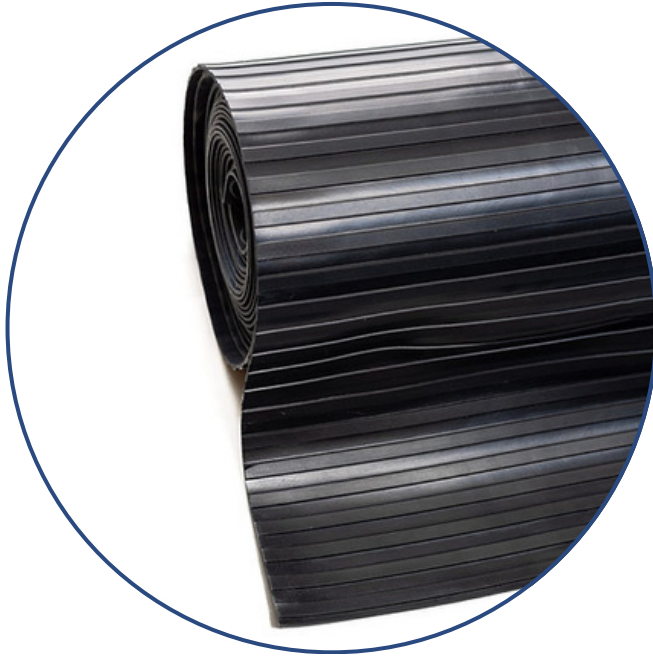
#### Material Composition

Natural & Recycle Rubber



# NON-SLIP WAREHOUSE & FACTORY FLOORING

Our non-slip rubber flooring for warehouses and factories provides superior traction, enhancing safety in high-traffic and heavy-duty environments. Designed to withstand the rigours of industrial use, it resists wear and tear while protecting floors from damage. Easy to maintain, this durable flooring ensures a safer, more efficient workspace for employees, reducing the risk of slips and falls.



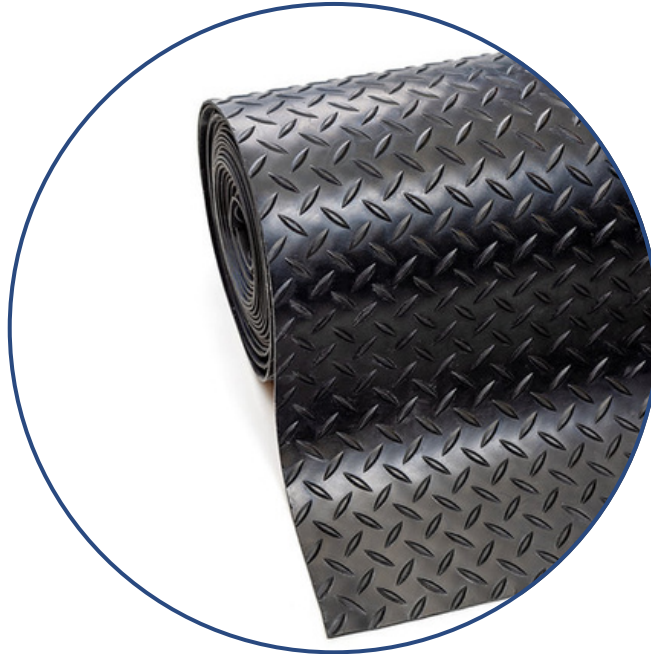
## WIDE RIBBED RUBBER FLOORING

### Size

A4, 1 - 9 M, FULL ROLL

### Thickness

3MM, 5MM



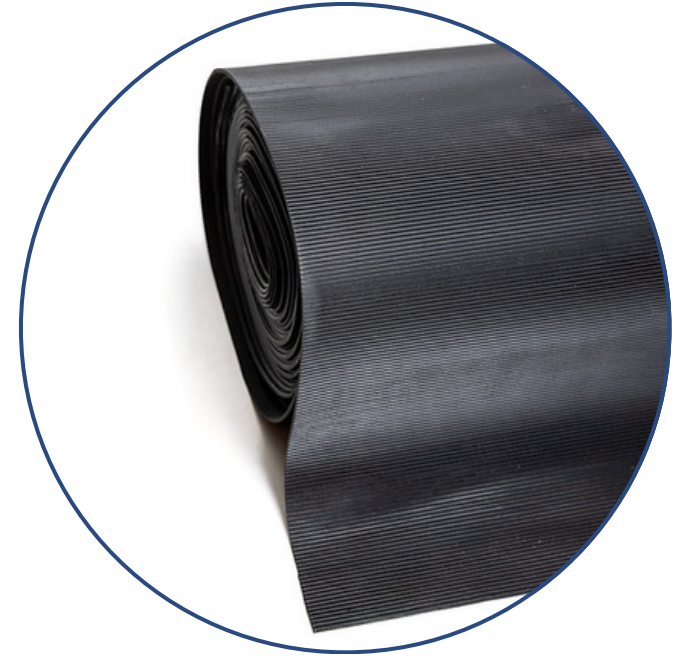
## DIAMOND CHECKER PLATE RUBBER FLOORING

### Size

A4, 1 - 9 M, FULL ROLL

### Thickness

3MM, 5MM



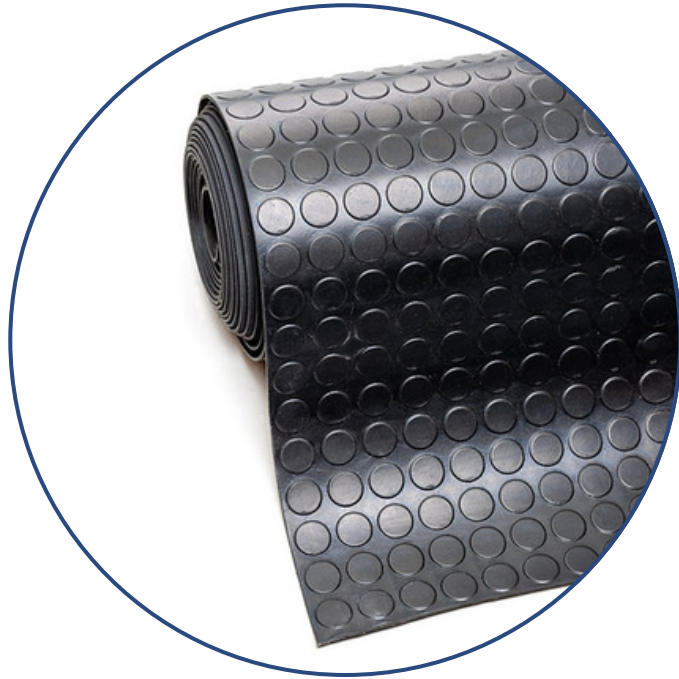
## FINE RIBBED RUBBER FLOORING

### Size

A4, 1 - 9 M, FULL ROLL

### Thickness

3MM, 5MM



### COIN RUBBER FLOORING

**Size**

A4, 1 - 9 M, FULL ROLL

**Thickness**

3MM, 5MM



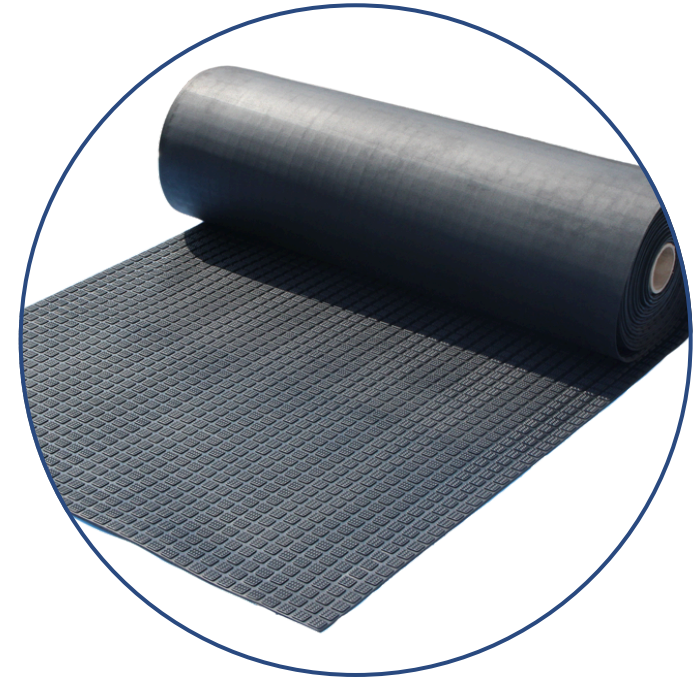
### 5-BAR RUBBER FLOORING

**Size**

A4, 1 - 9 M, FULL ROLL

**Thickness**

3MM, 5MM



### QUBEX ROLL | SUSTAINABLE RUBBER FLOORING

**Size**

12M LONG X 1M WIDE X 6MM THICK

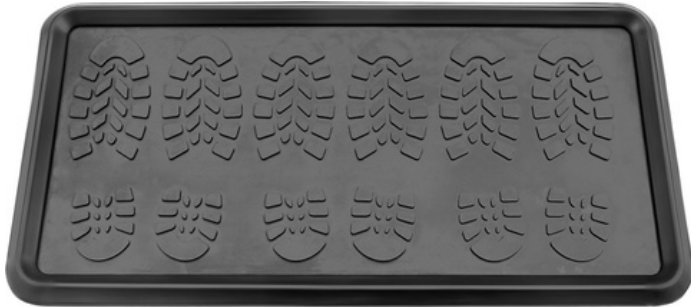
**Material Composition**

Natural and Recycle Rubber



# BOOT TRAYS & SCRAPER MATS

Keep your workplace clean and safe with our durable Boot & Scraper Mat. It is designed for high-traffic entryways and features a rugged surface that removes dirt, mud, and debris from footwear, maintaining cleanliness in busy areas. Made from tough, weather-resistant rubber, it provides a non-slip surface for added safety. Easy to clean and built for long-lasting performance, this mat is an essential tool for reducing maintenance and improving safety at entrances.



## BOOT TRAY MAT

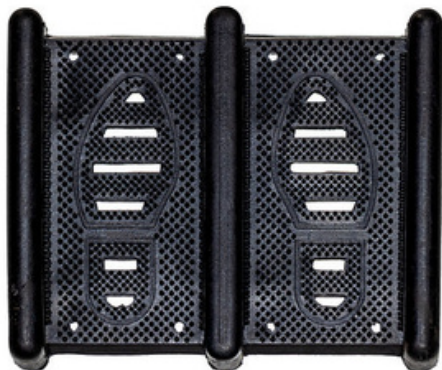
### Size

40cm x 80cm x 22mm

40cm x 80cm x 27mm

### Material Composition

Natural and Recycle Rubber



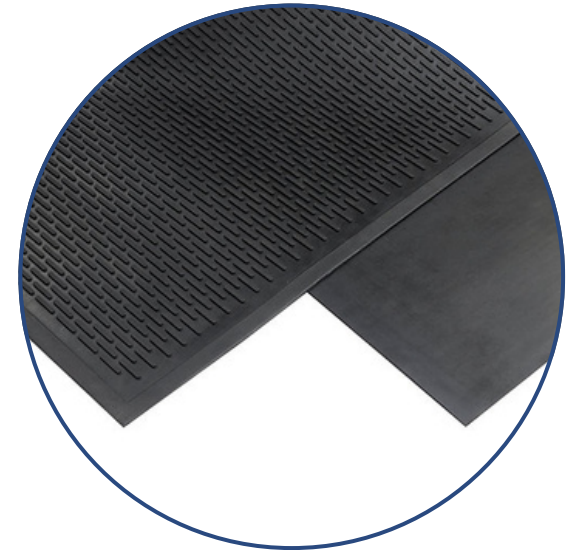
## BOOT SCRAPER MAT

### Size

39cm x 32cm x 53mm

### Material Composition

Natural and Recycle Rubber



## RIDGE SCRAPER MAT

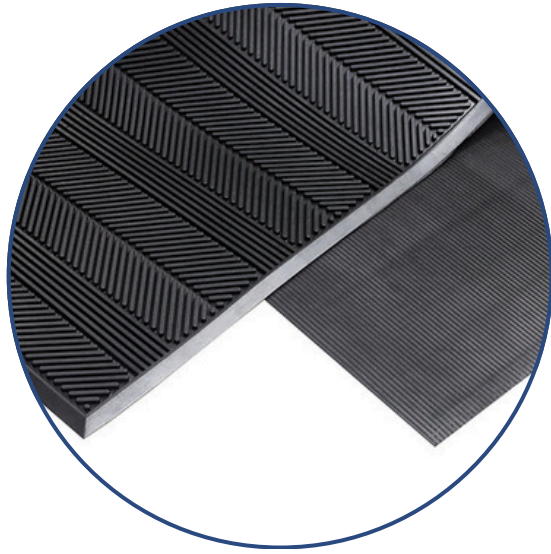
### Size

60cm x 90cm x 8mm

### Material Composition

Natural and Recycle Rubber





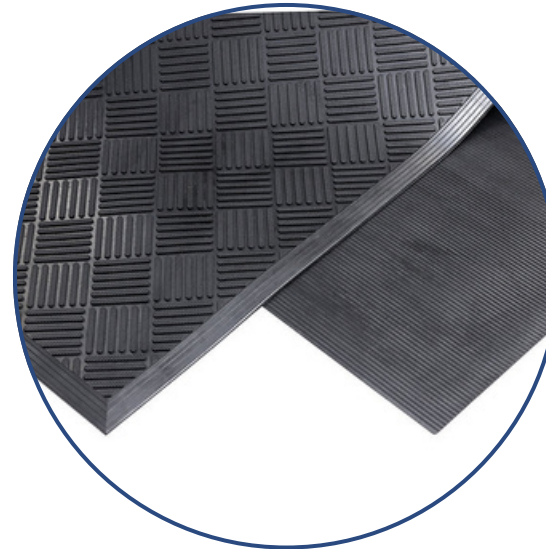
### STRIP SCRAPER MAT

#### Size

87cm x 154cm x 9mm

#### Material Composition

Natural and Recycle  
Rubber



### CLEAN SCRAPER MAT

#### Size

90cm x 150cm x  
10mm

#### Material Composition

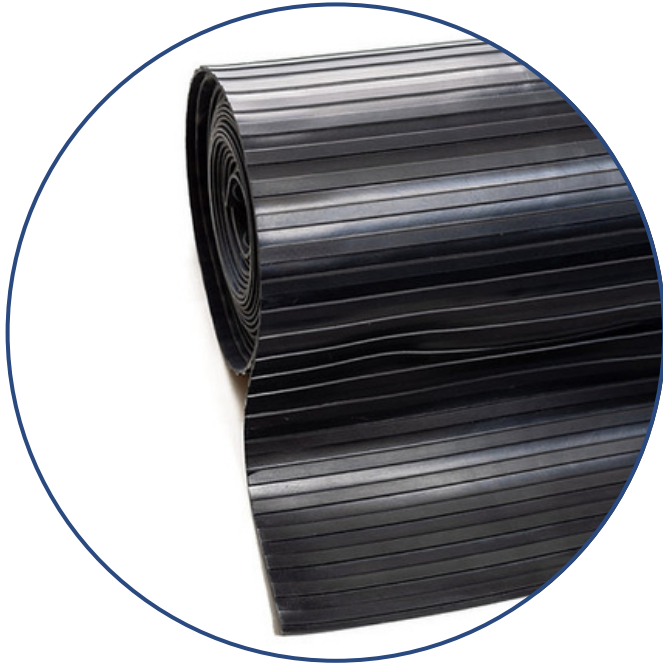
Natural and Recycle  
Rubber





# VAN FLOOR LINER

Our high-quality rubber flooring is designed to withstand the demands of challenging environments, offering excellent protection against spills, scratches, and daily wear and tear. Ideal for vehicles used in transportation, it keeps cargo secure during transit while providing a durable, easy-to-clean surface that reduces maintenance and enhances safety.



## WIDE RIBBED RUBBER FLOORING

### Size

A4, 1 - 9 M, FULL ROLL

### Thickness

3MM, 5MM



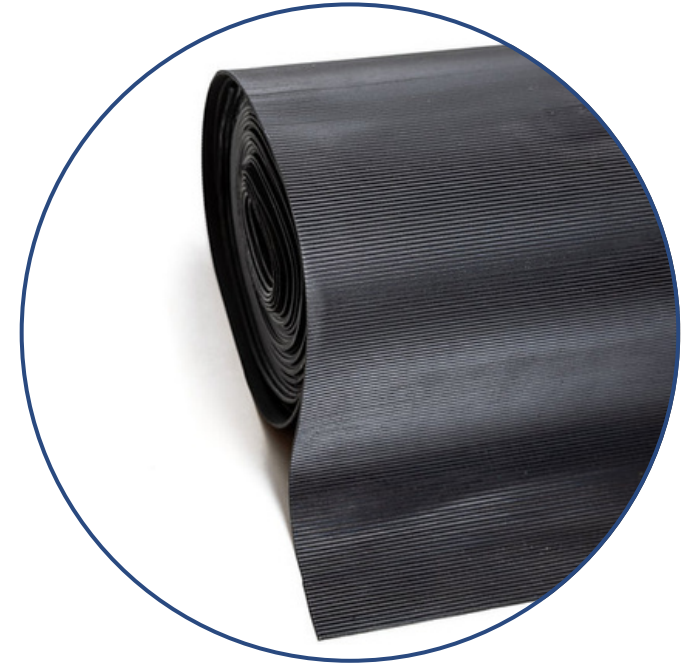
## DIAMOND CHECKER PLATE RUBBER FLOORING

### Size

A4, 1 - 9 M, FULL ROLL

### Thickness

3MM, 5MM



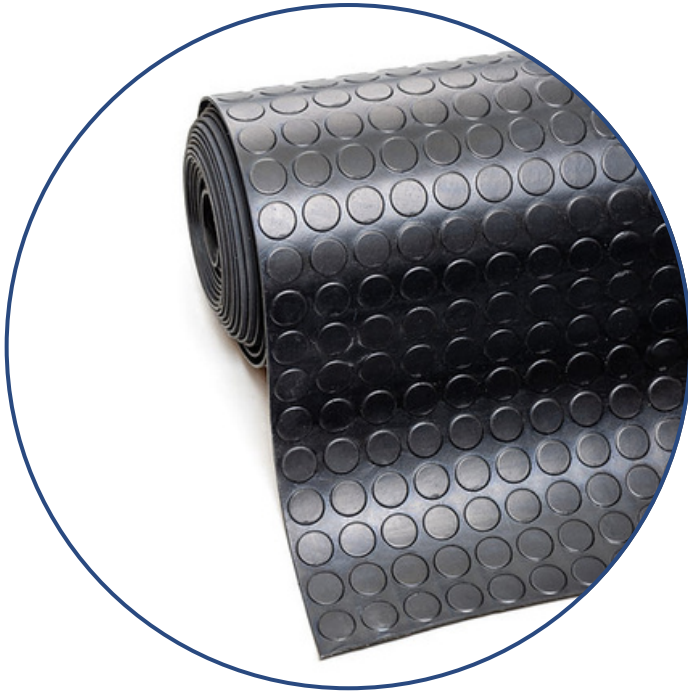
## FINE RIBBED RUBBER FLOORING

### Size

A4, 1 - 9 M, FULL ROLL

### Thickness

3MM, 5MM



## COIN RUBBER FLOORING

### Size

A4, 1 - 9 M, FULL ROLL

### Thickness

3MM, 5MM



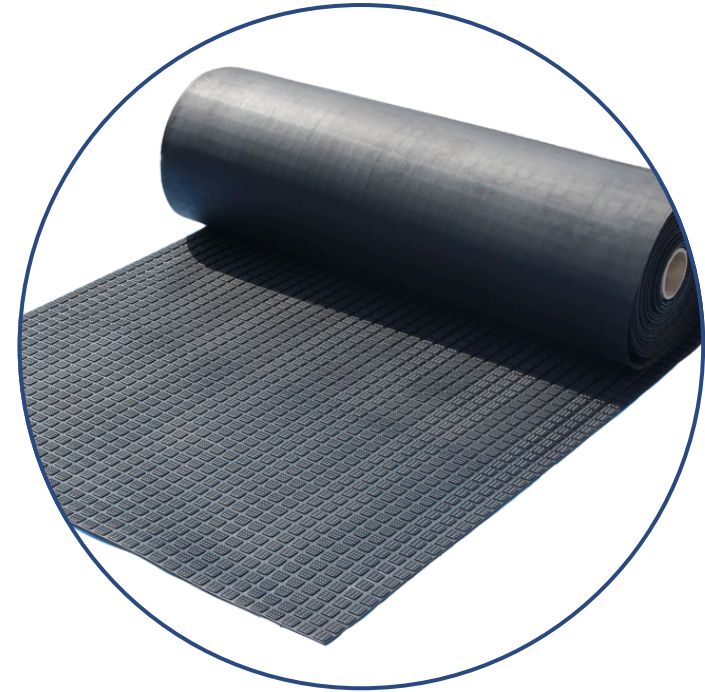
## 5-BAR RUBBER FLOORING

### Size

A4, 1 - 9 M, FULL ROLL

### Thickness

3MM, 5MM



## QUBEX ROLL | SUSTAINABLE RUBBER FLOORING

### Size

12M LONG X 1M WIDE X 6MM THICK

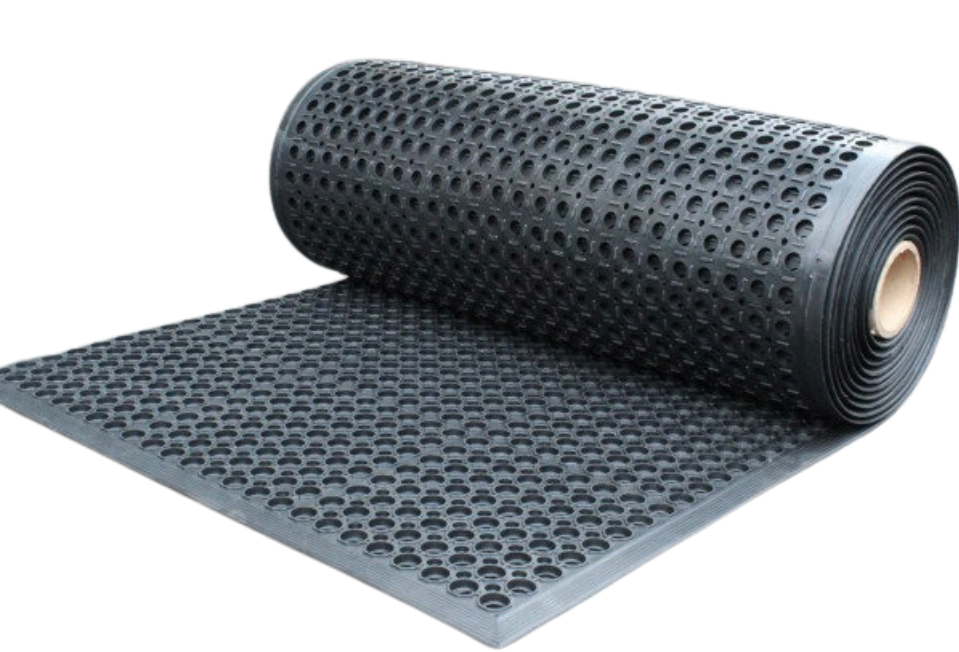
### Material Composition

Natural and Recycle Rubber



# RAMP & LOADING AREAS

Our rubber flooring is perfect for ramps and loading areas. It provides a durable, non-slip surface that ensures safety in high-traffic zones. It withstands heavy equipment and foot traffic while offering excellent traction in wet conditions. Easy to maintain and built to last, it reduces accidents and enhances loading efficiency, making it ideal for indoor and outdoor applications.



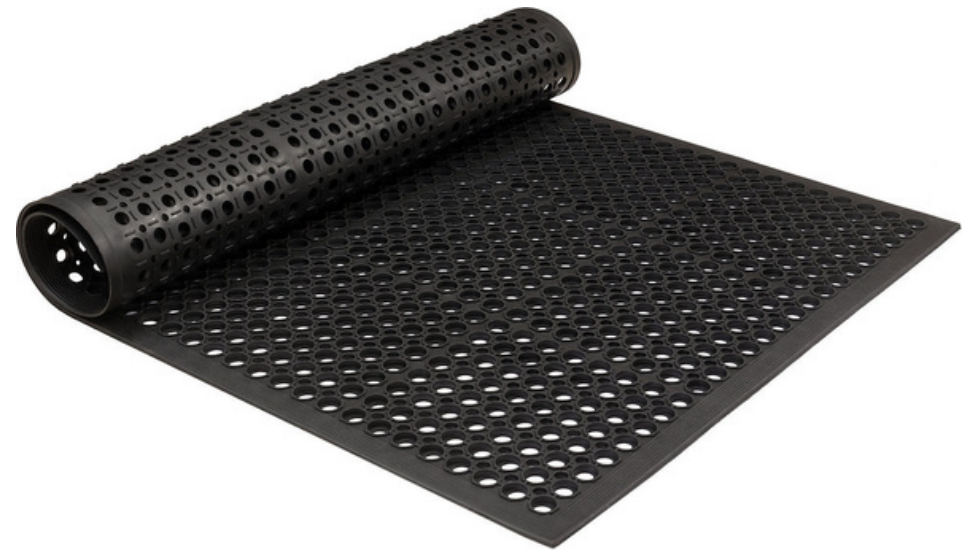
## RAMP ROLL

### Size

0.9m x 10m x 12mm

### Material Composition

Natural and Recycle Rubber



## RAMP MAT

### Size

80cm x 120cm x 12mm

### Material Composition

Natural and Recycle Rubber



### O-RING GRASS ROLL

#### Size

1m x 7.5m x 22mm

1m x 9m x 16mm

#### Material Composition

Natural and Recycle Rubber



### OCT-O-ROLL ROLL

#### Size

1m x 9.24m x 13mm

#### Material Composition

Natural and Recycle Rubber



# GASKET, NEOPRENE SPONGE & FOAM

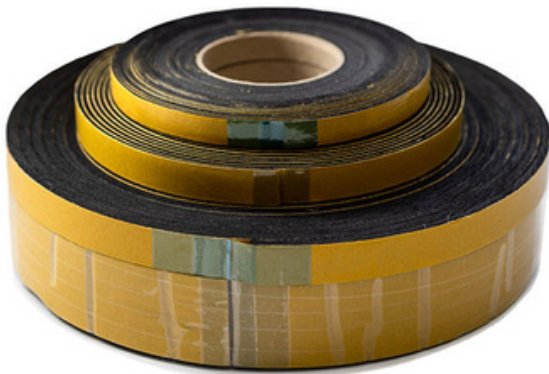
Reliant Rubber offers custom gaskets and seals designed to meet the precise specifications of industrial applications. Whether it's our Steam Seal 1300 or precision-moulded gaskets, we provide reliable, high-performance solutions tailored to your needs. Explore our customisable options to ensure your operations' perfect fit and exceptional reliability.



## STEAM - SEAL 1300 GASKET

### Size

4" X 3" (1/2" FLANGE)  
5" X 3 1/2" (1/2" FLANGE)  
6" X 4" (5/8 FLANGE)  
12" X 9" (1" FLANGE)  
15" X 11" (1" FLANGE)  
16" X 12" (1" FLANGE)  
320 MM X 220MM (24MM FLANGE)  
400MM X 300MM (25MM FLANGE)  
420MM X 320MM (25MM FLANGE)



## NEOPRENE SPONGE TAPE

### Size

10M x 10MM TO 10MX100MM

### Thickness

2MM TO 50MM

### Type

Plain / Self - Adhesive



## TOPOG-E 180 SERIES MOULDED GASKET

### Size

4" X 3" (1/2" FLANGE)  
5" X 3 1/2" (1/2" FLANGE)  
6" X 4" (5/8 FLANGE)  
12" X 9" (1" FLANGE)  
15" X 11" (1" FLANGE)  
16" X 12" (1" FLANGE)  
320 MM X 220MM (24MM FLANGE)  
400MM X 300MM (25MM FLANGE)  
420MM X 320MM (25MM FLANGE)  
7" X 9" (3/4 FLANGE)  
14" X 11" (1 3/8" FLANGE)  
11" X 8" (1" FLANGE)

# A4 RUBBER SHEETS SAMPLE

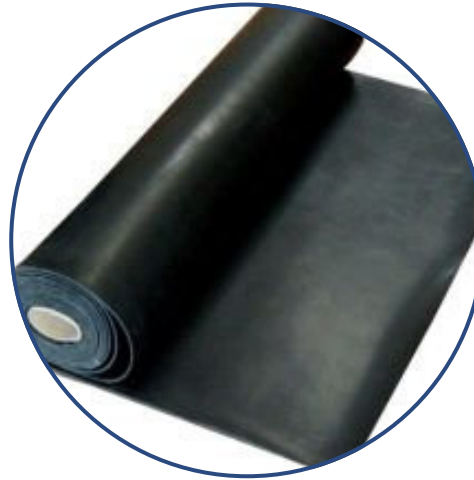
Discover our wide selection of high-quality rubber sheets ideal for various industrial applications. Available in long rolls and customisable to your required dimensions, our rubber sheets provide reliable performance and flexibility. We also offer A4-sized samples to help you make the best choice for your needs.



## NEBAR-RUBBER BONDED CORK

**Size**  
A4

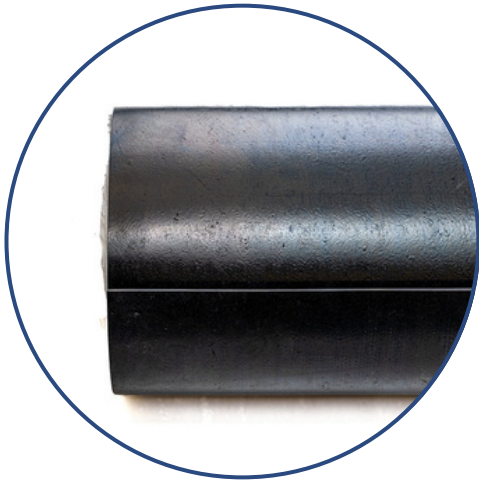
**Thickness**  
3MM, 5MM, 6MM



## NR/SBR Commercial Rubber Sheetting

**Size**  
A4

**Thickness**  
1.5MM, 2MM, 3MM, 5MM, 6MM,  
8MM, 10MM, 15MM

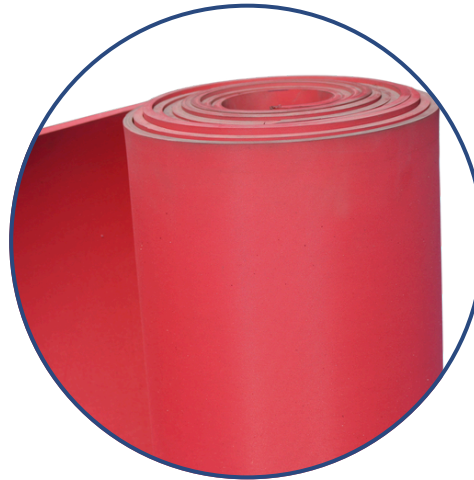


## BLACK SHOTBLAST RUBBER SHEETING

**Size**  
A4

**Thickness**  
3MM, 6MM, 10MM, 12MM, 15MM

**Material**  
Plate/Plate  
Cloth/Plate

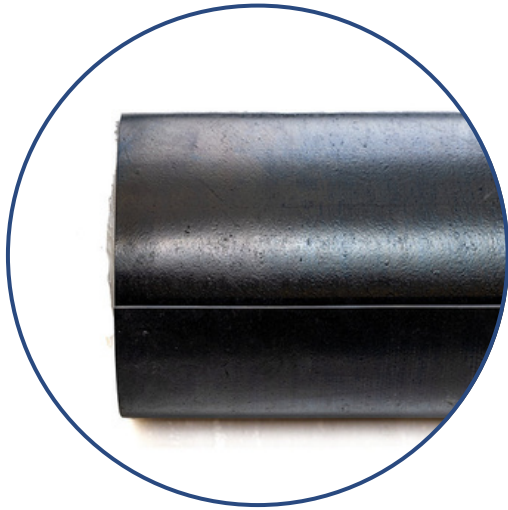


## RELIANT RED SHOTBLAST RUBBER SHEETING

**Size**  
A4

**Thickness**  
3MM, 5MM, 10MM





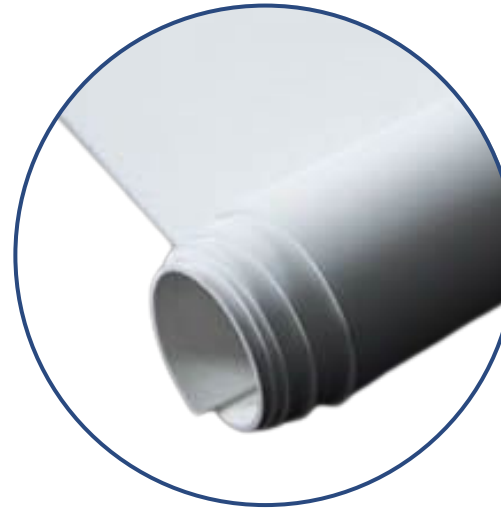
### NEOPRENE RUBBER SHEETING

Size

A4

Thickness

1MM, 1.5MM, 2MM, 3MM, 6MM



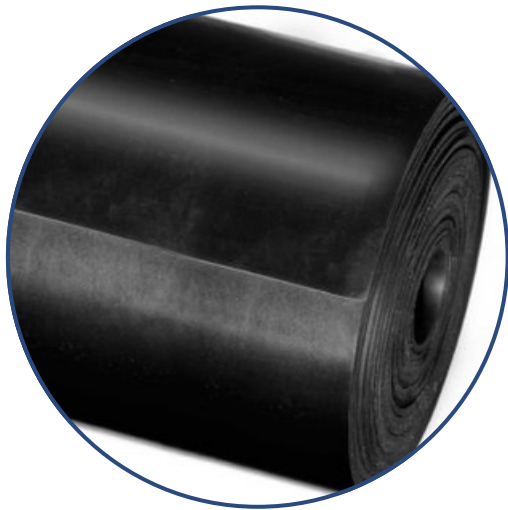
### FOOD GRADE NATURAL WHITE RUBBER SHEETING

Size

A4

Thickness

2MM, 3MM, 5MM, 6MM



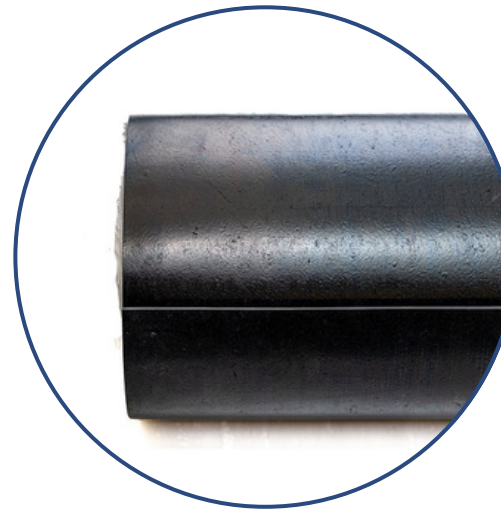
### EPDM RUBBER SHEETING MAT

Size

A4

Thickness

1MM, 3MM



### NITRILE RUBBER SHEETING

Size

A4

Thickness

1MM, 1.5MM, 2MM, 3MM, 6MM



[RELIANTRUBBER.CO.UK](http://RELIANTRUBBER.CO.UK)



GRANGE WORKS, GRANGE ROAD,  
BATLEY WF17 6LN



01924 420 098



[SALES@RELIANTRUBBER.CO.UK](mailto:SALES@RELIANTRUBBER.CO.UK)

